

Making RDi Your Own

The OMNI User
March 20, 2018

Making RDi Your Own

- Bruce Guetzkow (GMan)
- Liebovich Bros., Inc. – Rockford IL
- WMCPA
- 30+ Years in IT
- 30+ Technical Articles
- RPG, SQL, CL, REXX, PHP, HTML, CSS, JavaScript, and anything else I can get my hands on

Agenda

- Phones – Stealth Mode, Please!
- Basic Information
- Plugins
- Preferences
- Tips
- Questions?

RDi: Based on Eclipse

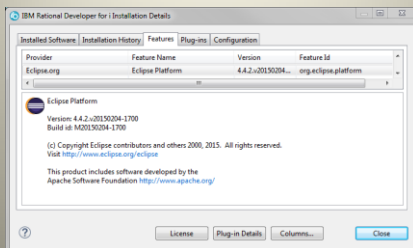
- RDi Version 9.5.x: Eclipse Version 4.4.x – Luna
- RDi Version 9.6.x: Eclipse Version 4.6.x – Neon

- Add plugins that are designed for your version of Eclipse

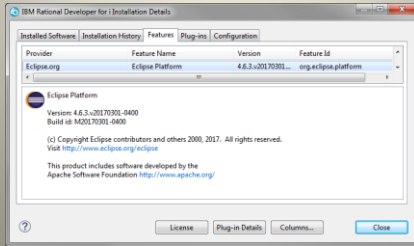
RDi Version



Eclipse Version – RDi 9.5.x



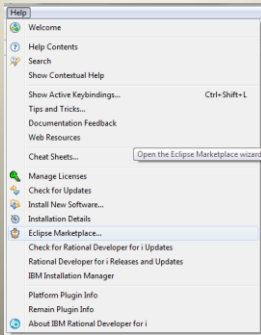
Eclipse Version – RDi 9.6.x



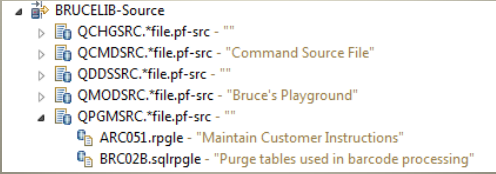
Plugins

- Add functionality to RDi (Eclipse)
 - Eclipse Marketplace
 - eclipse.marketplace.org
 - iSphere
 - ISPHERE Library needs to be installed
 - Compare/Merge
 - Search (VERY FAST!)
 - Label Decorations (set Preference)
 - Spooled Files
 - PDT (PHP Development Tools)
 - Vendor-supplied

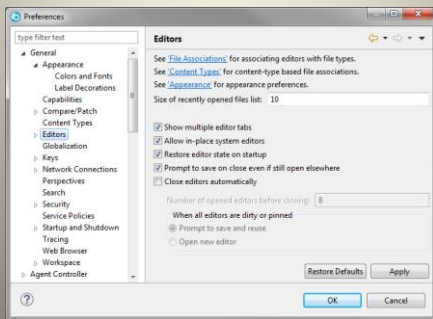
Eclipse Marketplace



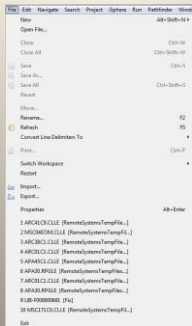
Label Decorations



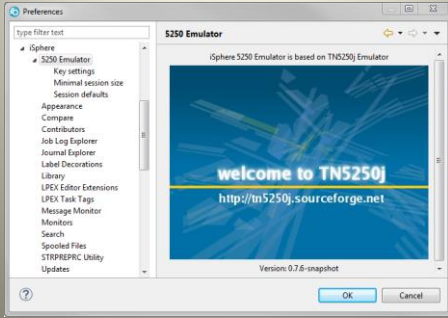
General => Editors



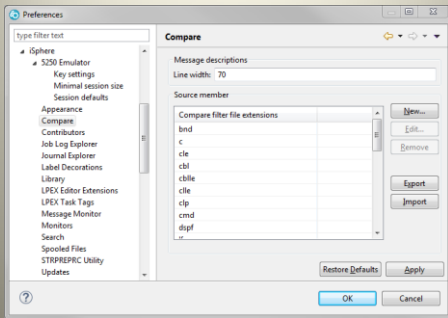
Recently Opened Files



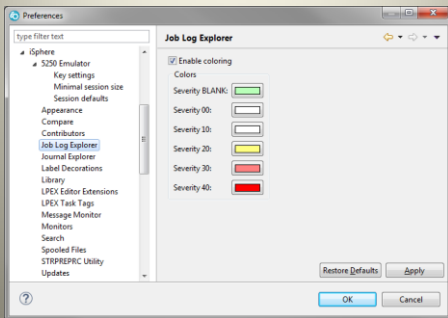
iSphere => 5250 Emulator



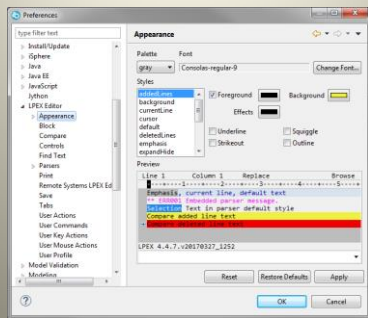
iSphere => Compare



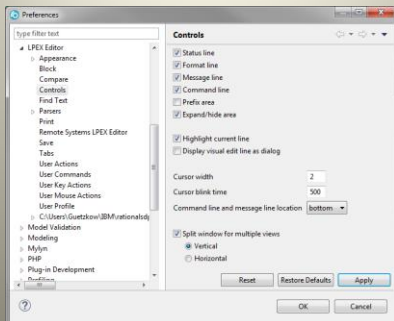
iSphere => Job Log Explorer



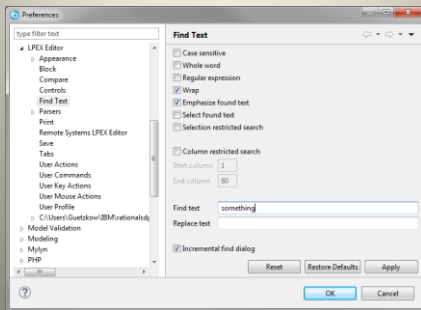
LPEX Editor => Appearance



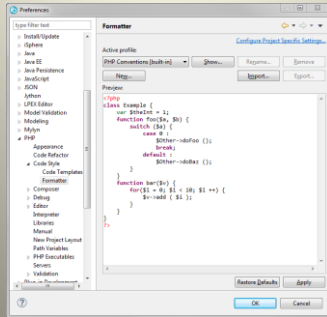
LPEX Editor => Controls



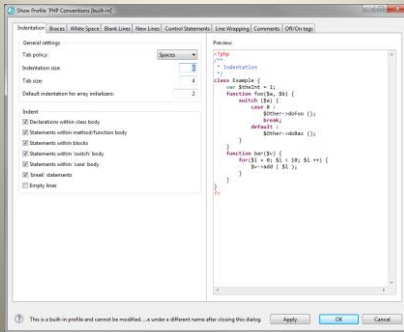
LPEX Editor => Find Text (defaults)



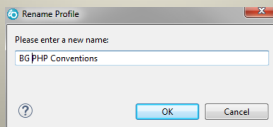
PHP => Code Style => Formatter – 9.6.x



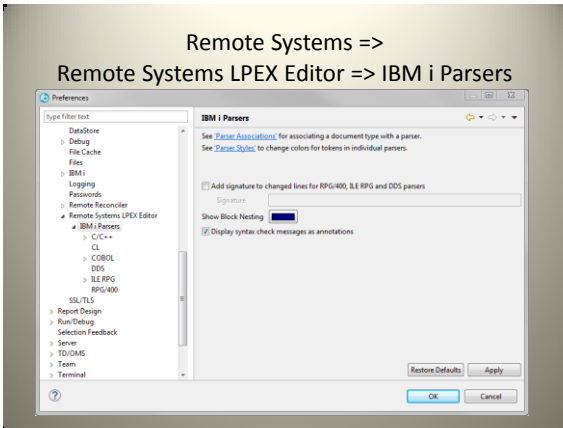
Show PHP Profile – 9.6.x



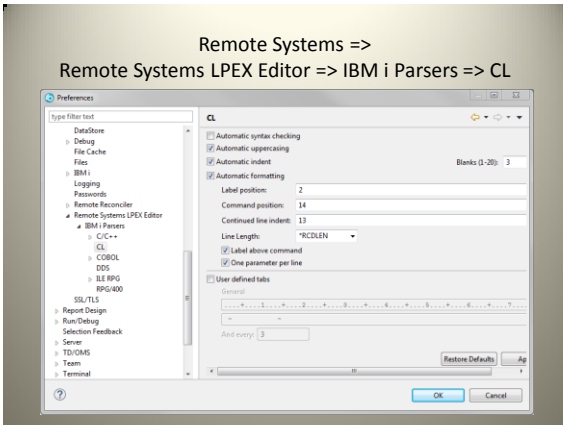
Rename Profile – 9.6.x



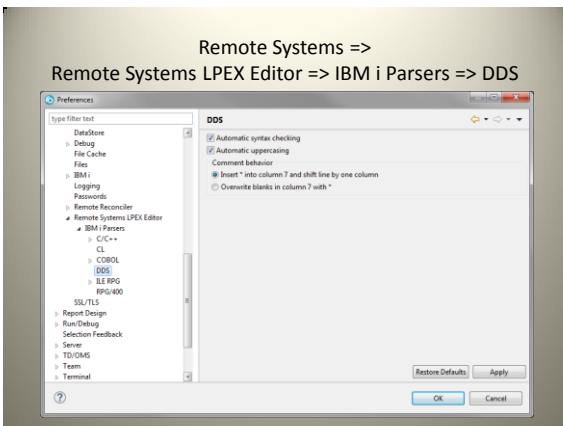
Remote Systems => Remote Systems LPEX Editor => IBM i Parsers



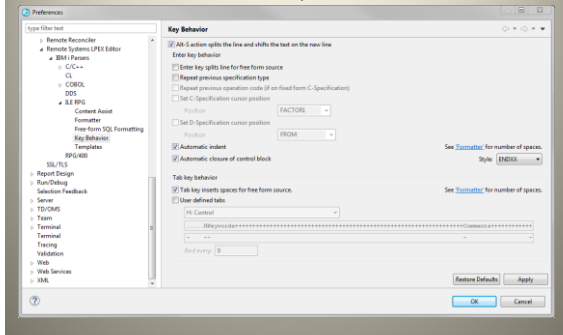
Remote Systems => Remote Systems LPEX Editor => IBM i Parsers => CL



Remote Systems => Remote Systems LPEX Editor => IBM i Parsers => DDS



Remote Systems =>
Remote Systems LPEX Editor => IBM i Parsers =>
ILE RPG => Key Behavior



Tips

- Terminology
 - View – Information Window
 - Perspective – Collection of Views
- Give you more Real Estate
 - Make editor view as large as possible
 - Full screen (full on one screen if using multiple)
 - Minimizing Stacks
 - Double-click View to fill perspective

Views

- Add/Remove Views as needed
- Views can be positioned anywhere you like
- Snippets
- Object Table
- Tasks/Bookmarks
- Properties

Really Full Screen

- Multiple screens
- Maximize icon fills one screen
- For Maximum Real Estate
 - Restore Down
 - Drag top/bottom/left/right to edges of **both** screens
 - Minimize all stacks, leaving only editor
 - Open one or more source members
 - Align edges with break between monitors

Questions?

- You can always contact me at:
 - bguetzkow@liebovich.com
 - @gmantechi (Twitter)
 - LinkedIn
- Thanks for attending!
